

## Shenzhen DanEr Technology Co.,Ltd

Professional packaging manufacturer, providing OEM and ODM service

**ADD:**No38, Qinfu Road,Liyue Community,  
Henggang Street, Longgang District, Shenzhen City, In  
china

**Phone :** +86 13554855879/15989363280

**Fax:**

**Email:** [Alisa@szdr-can.com](mailto:Alisa@szdr-can.com)

**whatapp/skype:** +86 13554855879/shushu0212



# CONTENTS



01 Company Introduction

02 Certifications

03 Product Display

04 Order Form

# Company Introductions



丹尔科技

Shenzhen daner technology co., ltd located in shenzhen city, Guangdong province, is a private enterprise, specialized in producing all kinds of packaging products, It was established in 2013, with registered capital of RMB 300 million. Any food packaging can be customized or processed, free of charge for customers to design, and make some samples

Our company has developed rapidly in recent years, with three own factories (mold injection molding factory, metal packaging factory, paper can box packaging factory) and a cooperative factory (glass factory). Have their own technical research and development team, Sales, design, production, R & D as one-stop of the supply chain, More efficient production cost and delivery time savings

Our company has been certified by ISO9001: 200 13. Our products have good property of abrasion resistance, rust proof and sealing stability, which meet national standard of Packing Containers for Packages of Dangerous Goods. Our company is not only the member of Association for Quality in Guangdong province, supporting many of International and domestic well-known enterprises. We, daner, are well experienced in manufacturing food packaging. With high professional level in mechanic manufacturing and mature production techniques, and based on the service tenet of "Customer-centered, Credit-based", we are increasingly innovating and expanding. Since the establishment in the year of 2013, we have already had five canning production lines, 10 injection equipments, Multiple paper cans manufacturing related equipment, several productions for sundry cans and related supporting equipments, and meanwhile owned more than one hundred different kinds of moulds for canning production. Our R&D center keeps developing new products for customers. We have gained much more competitive advantages in production technology,

product quality, management, customers' satisfaction, etc, through the effort of new-product development from our R&D center and all staff.



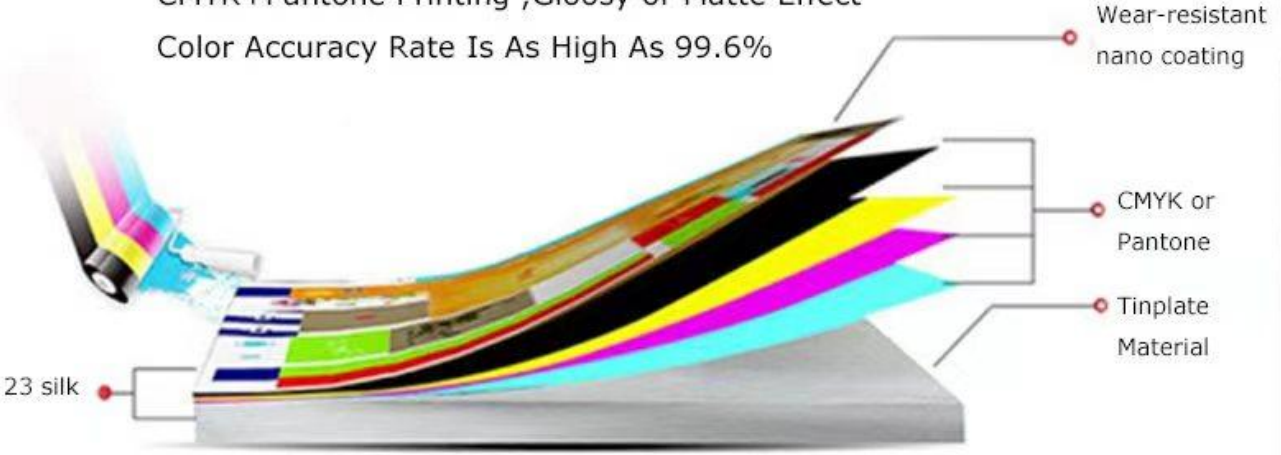
# Office&Sample Room



# Printing and Production Display

## CTP Plate Printing To Ensure Color Accuracy

CMYK+Pantone Printing ,Gloosy or Matte Effect  
Color Accuracy Rate Is As High As 99.6%



# Production and Equipment Display



# Standard Export Packing Display



# Certifications





Empty Tin Can For Holding Liquid  
(customized size and design/logo/labels)



# Empty tin can

(whiskey/cocktails/beverage/beer/spirits/milk/coffee etc)



slim tin can

60ml :Dia52.9x H61mm  
 100ml :Dia52.9x H71mm  
 140ml :Dia52.9x H87mm  
 180ml :Dia52.9x H103mm  
 250ml :Dia52.9x H127mm



stubby tin can

250ml: Dia65x H91mm



standard tin can

330ml (10oz):Dia65x H115mm  
 355ml(12oz) :Dia65x H122mm  
 473ml(16oz) :Dia65x H157mm  
 500ml(17oz) :Dia65x H168mm



Big volume tin can

D65xH95mm

## Straight-Body Empty Can



100ml 52.9\*71mm



150g 52x88mm



250ml 52.8\*132mm



330g 65\*122mm

# Empty Tin Can For Holding Liquid (Beer/other use)



1L Beer tin can

Size: D80xH247mm



1L Beer tin can

Size: D80xH247mm



750mL Beer tin can

Size: D80xH230mm



1L Beer tin can

D85xH190mm

# Empty Tin Can For Holding Liquid (BEER/VODKA)



Empty tin can

Dia71\*H210mm



#304 Stainless steel empty can

750ml:Dia90\*H132mm  
1000ml: Dia99\*H145mm



1L tin plate olive oil tin can

1000ml:Dia99\*H175mm



#304 Stainless steel 1L bottle

1000ml:Dia80\*H210mm

# Big Volume Tin Can (Beer/Vodka/spirits)



350ml--5L beer empty tin can

# Aluminum can



# Aluminum Bottle



Volume(ml)	Size (mm)	AW Size (mm)	Volume(ml)	Size (mm)	AW Size (mm)
375	66*155	207*80	1500	88*300	276*200
500	66*195	207*110	2000	104*300	326*200
1000	83*240	260*140	2300	130*230	408*140
1200	93*240	292*140			



# Aluminum Box/Bowl

<p>10ml</p>  <p>Φ41*H15</p>	<p>15ml</p>  <p>Φ42*H18</p>	<p>30ml</p>  <p>Φ47*H24</p>	<p>40ml</p>  <p>Φ56*H22</p>
<p>50ml</p>  <p>Φ56*H27</p>	<p>60ml</p>  <p>Φ68*H25</p>	<p>80ml</p>  <p>Φ68*H35</p>	<p>100ml</p>  <p>Φ83*H26</p>
<p>110ml</p>  <p>Φ65*H50</p>	<p>120ml</p>  <p>Φ83*H30</p>	<p>120ml</p>  <p>Φ68*H45</p>	<p>150ml</p>  <p>Φ83*H35</p>
<p>180ml</p>  <p>Φ83*H38</p>	<p>200ml</p>  <p>Φ83*H42</p>	<p>230ml</p>  <p>Φ94*H42</p>	<p>250ml</p>  <p>Φ100*H42</p>



6323-40ML



6326-50ML



7327-75ML



8331-100ML



8335-120ML



9936-150ML



9940-200ML



9950-250ML



9960-300ML

## One-Off Aluminum Bowl

# Empty Tin Can

(coffee/ tea/nuts/powder/dry goods/food)

Ø 60 \* 68 Hmm

Ø 73 \* 95 Hmm

Ø 90 \* 87(115 | 145 | 150) Hmm

Ø 105 \* 180 Hmm

Can Height Adjustable



## Coffee tin can with screw caps

50g D60\*H68mm  
150g D73\*H95mm  
180g D90\*87mm  
250g D90\*140mm  
500g D105\*155mm  
1000g D105\*190mm

## Petit Waist Round Can

230g D75\*H136mm

## Button Lid Box

500g L105\*W80\*H194mm  
250g L95\*W95\*H95mm

# Empty Tin Can

(coffee/ tea/nuts/powder/dry goods)



150g D65\*H90mm



500g D73\*H132mm



D80\*H200mm  
D90\*H160mm



D77\*H138mm



300g D84\*H158mm



280g D66\*H103mm



120-220g D82\*H143mm



D73\*H73mm D73\*H120mm  
D90\*H90mm D90\*H145mm  
D102\*H100mm

# Empty Tin Can

(Canned /Food/fish/sauce)



Common Standard	5#	6#	7#	8#	9#	12#	15#
Model	202#	211#	300#	307#	401#	502#	603#
Inner Dia(mm)	52.3	65	73	83	99	127	153
Adustable Height(mm)	55-200	55-200	55-200	70-200	55-200	80-200	120-200

# Empty Tin Can (Canned /Food/fish/sauce)



# Olive Oil Tin Can

(round and rectangular)



## Rectangular tin can

- 100ml:L69\*W45\*H80mm
- 250ml:L69\*W45\*H120mm
- 1L:L115\*W60\*H200mm
- 1.5L:L115\*W60\*H255mm
- 1.2L:L116\*W68\*H200mm
- 1.25L:L116\*W68\*H210mm

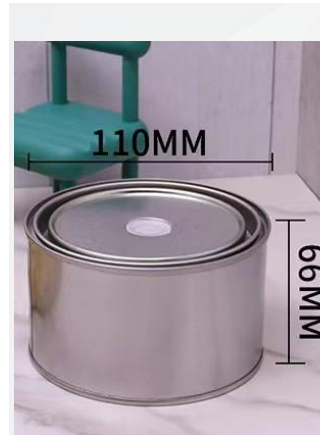
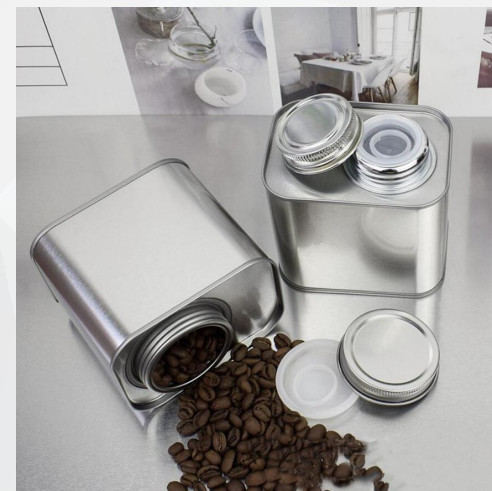
- 600ml:L77\*W55\*H180mm
- 900ml:L123\*W65\*H180mm
- 1.25L:L123\*W65\*H210mm
- 1.5L:L123\*W65\*H235/245mm
- 1.6L:L123\*W65\*H260mm
- 2.5L:L167\*W88\*H220mm
- 3L:L167\*W88\*H260mm
- 4L:L105\*W168\*H260mm

## Round tin can

- 100ml:D54\*H90mm
- 100ml:D54\*H95mm
- 110ml:D58\*H85mm
- 250ml:D58\*H120mm
- 250ml:D58\*H130mm
- 500ml:D68\*H130mm

- 500ml:D68\*H168mm
- 500ml:D68\*H180mm

# Fashion coffee packaging can



## Rectangular Tin Can :

150-180g L95\*W70\*H85mm  
180-200g L95\*W70\*H100mm  
220-250g L95\*W70\*H118mm  
200-220g L116\*W60\*H100mm  
450g L138\*W88\*H138mm  
200-250g L92\*W92\*H130mm

## Round Tin Can :

D85\*H83mm  
D85\*H120mm  
D85\*H95mm  
D100\*H90mm  
D110\*H90mm  
D110\*H66mm

# Candle Can&Candy&Gift box





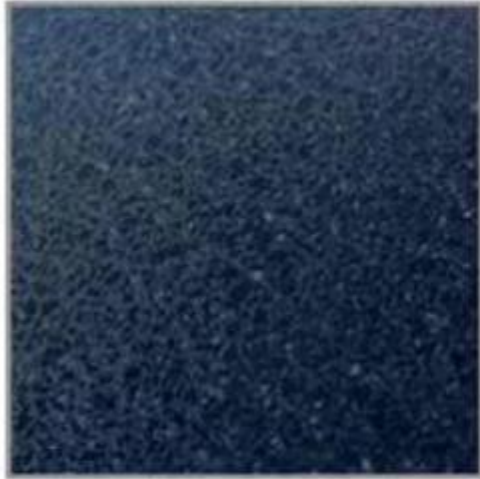
# Candle Can&Candy&Gift box



# Not Defined Shape Creative Design



# Processing Craft Choice



Explosive Oil Effect



Glossy Oil Effect



Gold Oil Effect



Matte Oil Effect



Overglossy Print Matte Oil Effect



Embossed Effect

# Cover Choice

## WHY CHOOSE TINPLATE?

### *SECURITY*

Tinplate material is safe, non-toxic, moisture-proof and oxygen proof, and has strong sealing property, which can ensure the health of food and effectively block the health risks.

### *PRACTICAL*

Tinplate material has the characteristics of corrosion resistance, strong protection and good ductility. It can protect the product well in transportation or in use.

### *BEAUTIFUL*

The products packed in iron box have more texture and value, which effectively reflects the real value of the products.



# How to ordered



**STEP 1** Choose the **Box/can style (shape) and capacity you like and need, and tell us the quantity and printing requirements.**

**STEP 2** We provide design templates according to the style of your tin, please find a graphic designer and tell what you need, product name, brand, logo, etc. Design artwork will be made for you.

**STEP 3** After the prepress department receives your design draft (Adobe Acrobat, or Illustrator), our designers will adjust the design draft before printing, and then send the design draft back to you for confirmation. Our design department is happy to build electronic.

**STEP 4** When you confirm the design drawings, we will restart the proofing or mass production.



# QUICK CONTACT GUIDE

快速联系我们

TEL+86 13554855879

mailbox:Alisa@szdr-can.com

whatsapp:+86 13554855879

QQ:732655640

Skype:shushu0212



丹尔科技